

COMPLAINT VERIFICATION REPORT

Date – 08.03.2026

Summary of the complaint

As per the complaint received telephonically by Sh. Amar Singh Purawat, dated 08.03.2026 it was informed that water flowing in drain adjoining M/s Ranjan Polyster Ltd., situated at Chittor Road , is having TDS value 3500 ppm and there might be some effluent discharge from Industries geographically connected with the aforesaid drain.

Action taken

As per the aforesaid complaint received at this office and in compliance of directions received from Regional Officer, RO- Bhilwara inspection was carried out at industries that are geographically connected with aforesaid drain and nearby area by undersign Board Official and following observations were made-

1. M/s Ranjan Polyster Ltd.

Inspection was carried out in presence of Chief Engineer Sh. V.P. Singh and following observations were made-

- ETP (effluent treatment Plant) was found operational.
- RO (Reverse Osmosis) plant was found operational.
- MEE and ATFD were found operational.
- Sludge and salt were properly stored at designated places.
- Direct discharge or spraying activities were not found.

2. M/s Chairman Processors Pvt. Ltd.

Inspection was carried out in presence of unit representative and following observations were made-

- ETP (effluent treatment Plant) was found operational.
- MEE and ATFD were found non- operational.
- Sludge and salt were not stored at designated places, Housekeeping was poor.
- Direct discharge or spraying activities were not found.

3. M/s A.K. Spintex Ltd.

Inspection was carried out in presence of unit representative and following observations were made-

- ETP (effluent treatment Plant) was found operational.
- RO (Reverse Osmosis) plant was found operational.
- MEE and ATFD were found operational.
- Sludge and salt were not stored at designated places, Housekeeping was poor.
- Direct discharge or spraying activities were not found.

4. Nearby area of the drain , on Chittor road and RICCO Hamirgarh was also inspected.
No sign of effluent discharge were observed.

Inspecting Official-



(Shilpa baheti)

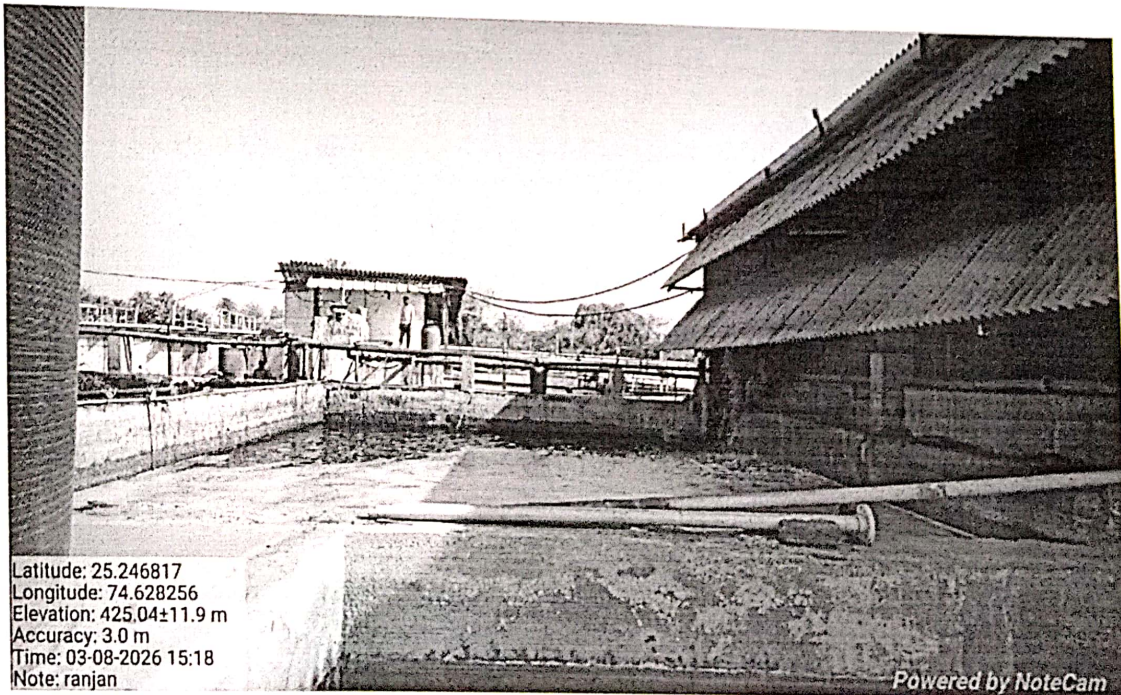
JEE, RSPCB

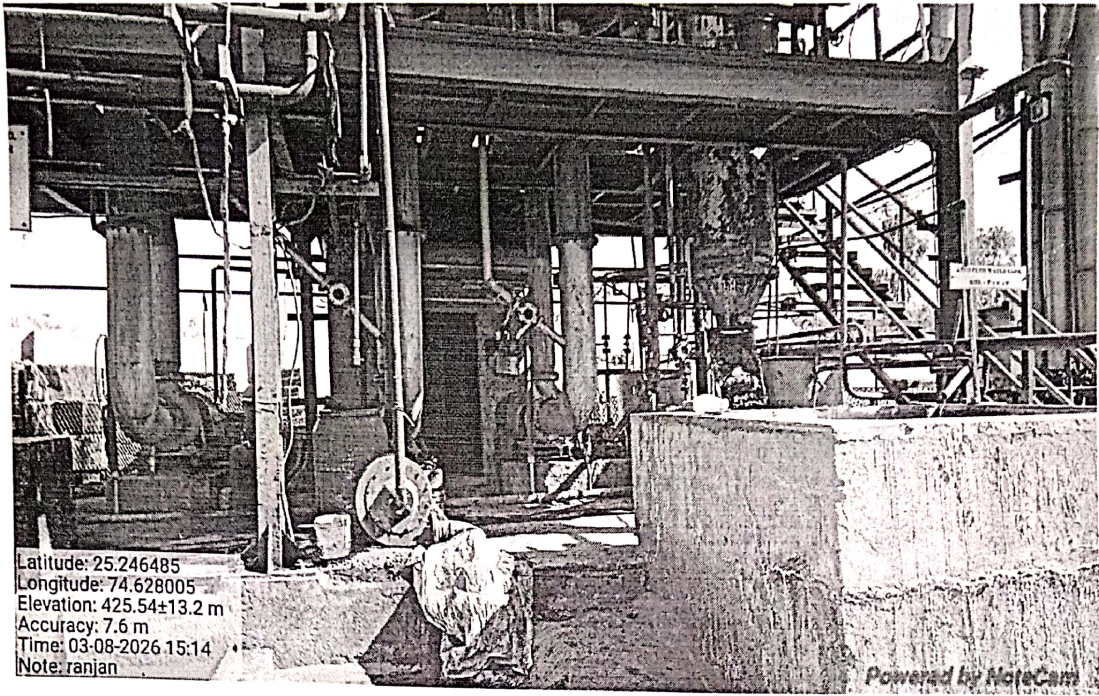
C/s



(Deepak Dhanetwal)

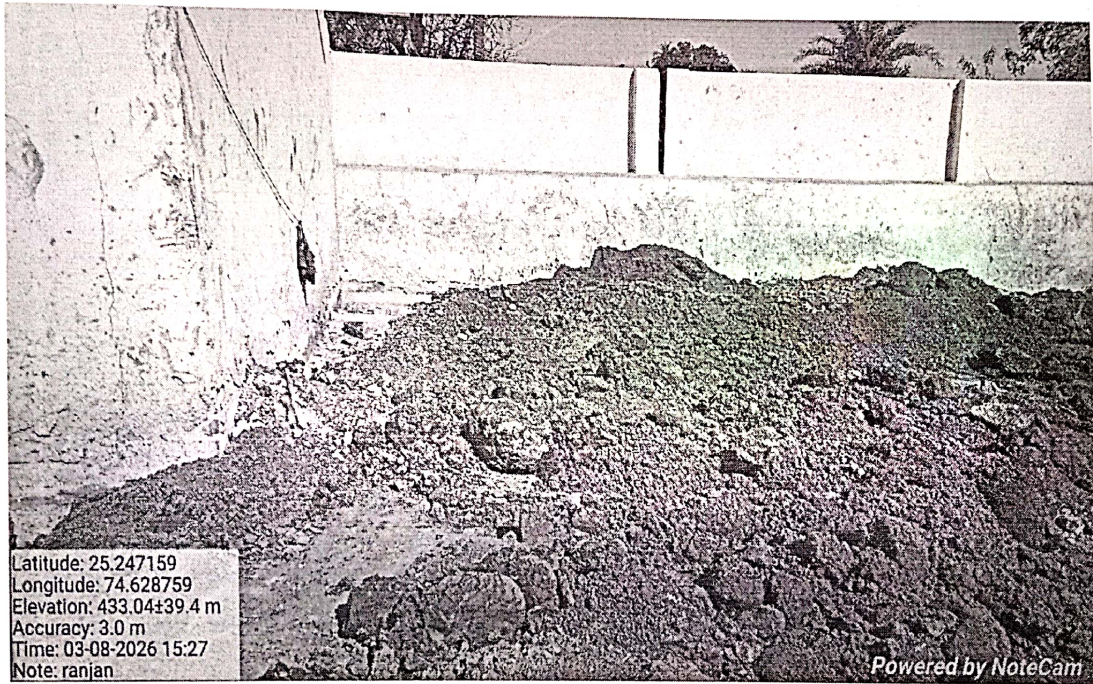
SEE & Regional Officer





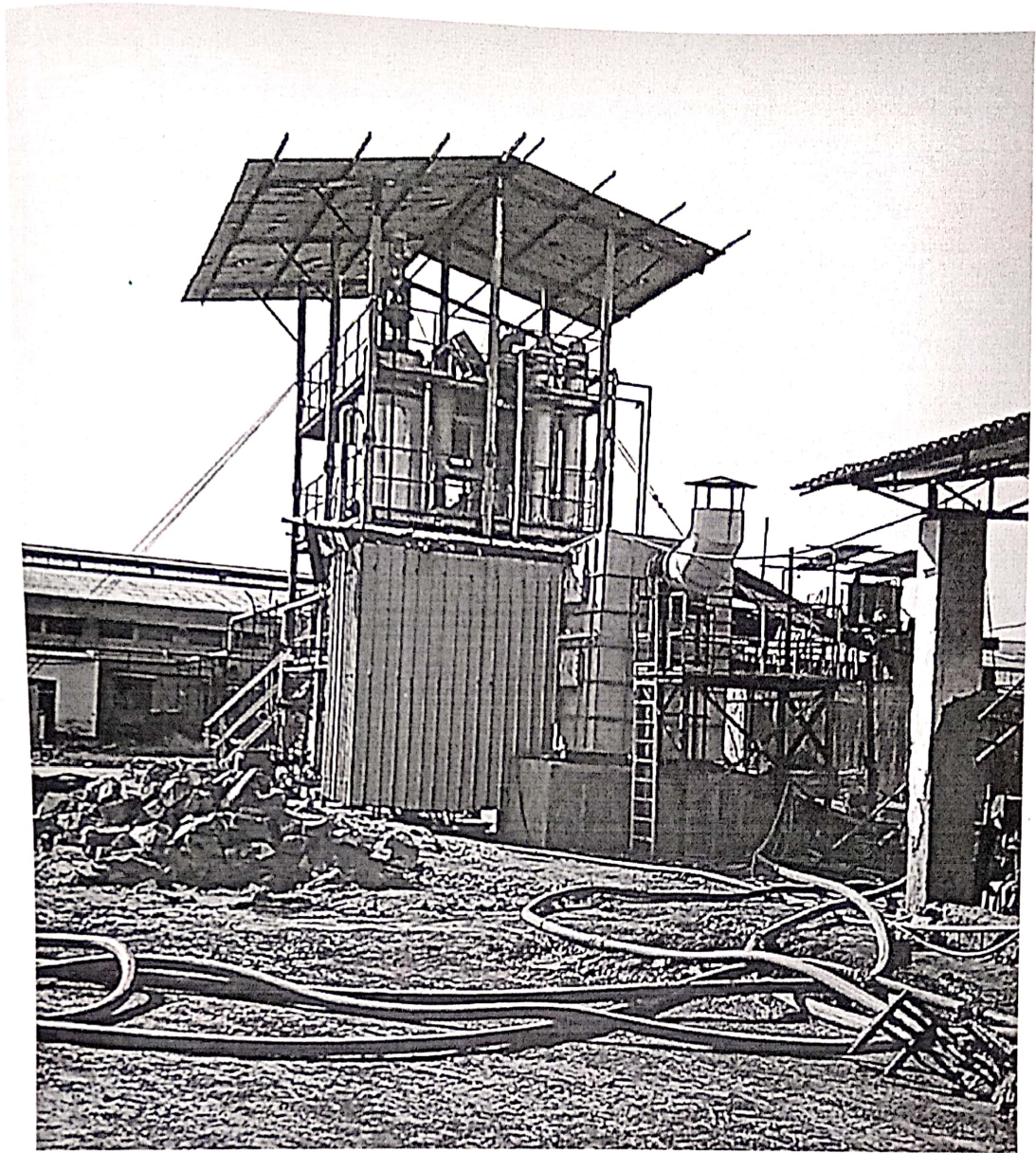
Latitude: 25.246485
Longitude: 74.628005
Elevation: 425.54±13.2 m
Accuracy: 7.6 m
Time: 03-08-2026 15:14
Note: ranjan

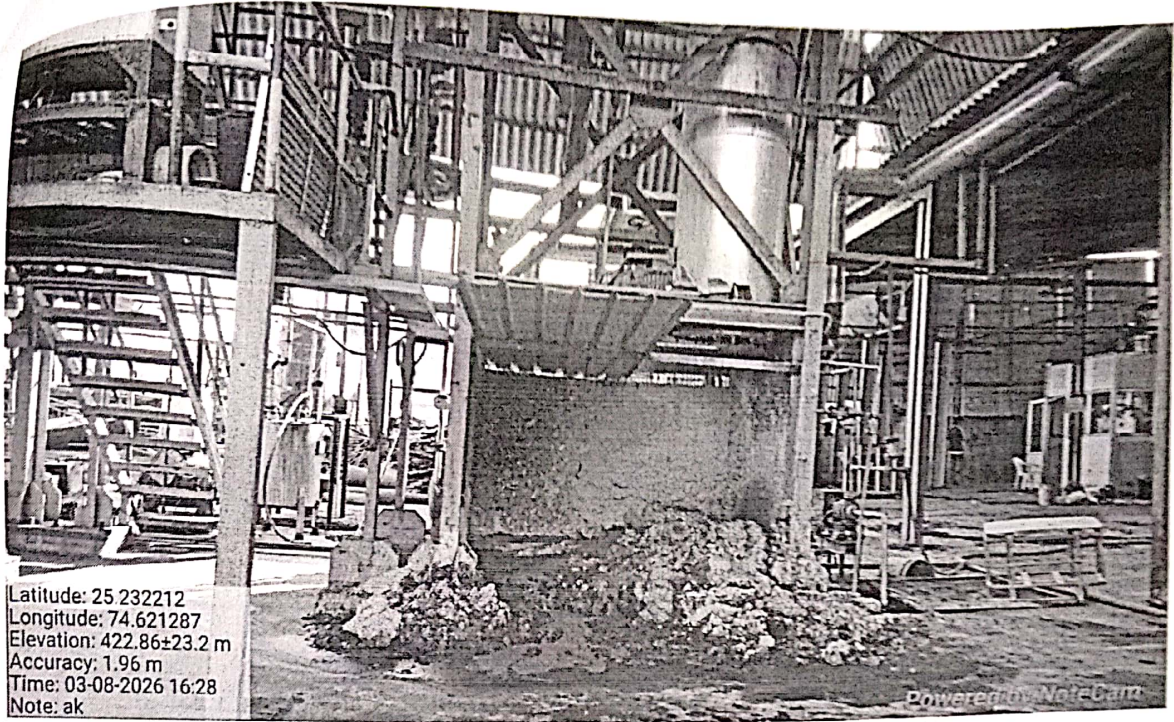
Powered by NoteCam



Latitude: 25.247159
Longitude: 74.628759
Elevation: 433.04±39.4 m
Accuracy: 3.0 m
Time: 03-08-2026 15:27
Note: ranjan

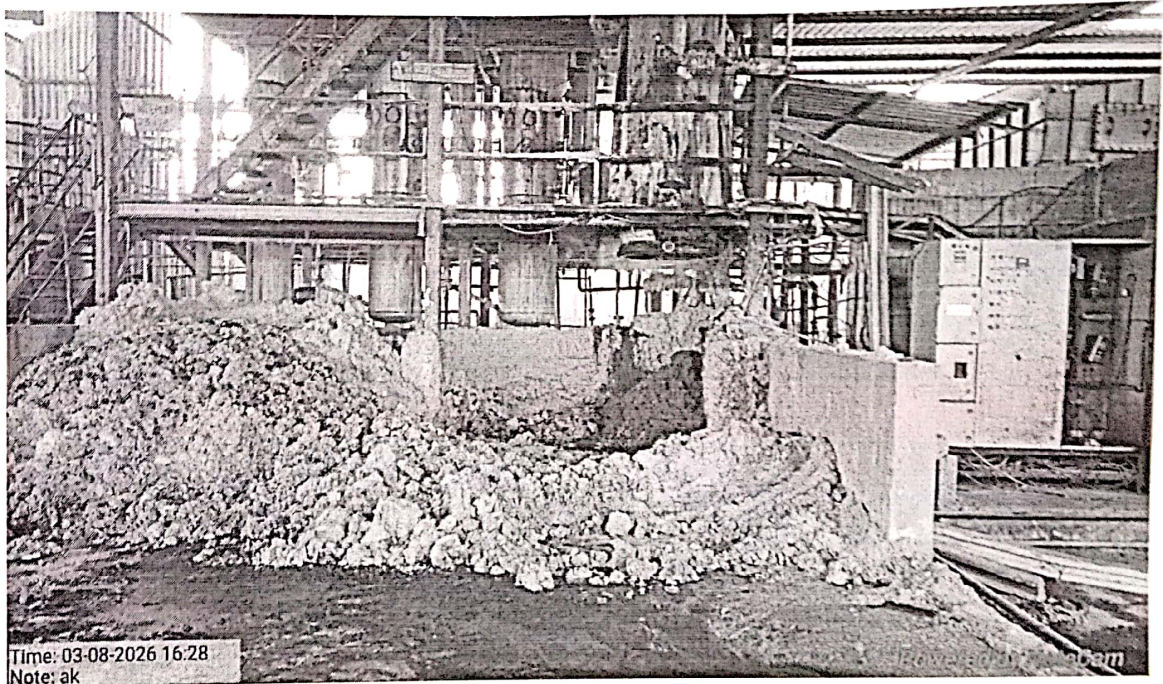
Powered by NoteCam





Latitude: 25.232212
Longitude: 74.621287
Elevation: 422.86±23.2 m
Accuracy: 1.96 m
Time: 03-08-2026 16:28
Note: ak

Powered by NoteCam



Time: 03-08-2026 16:28
Note: ak

Powered by NoteCam